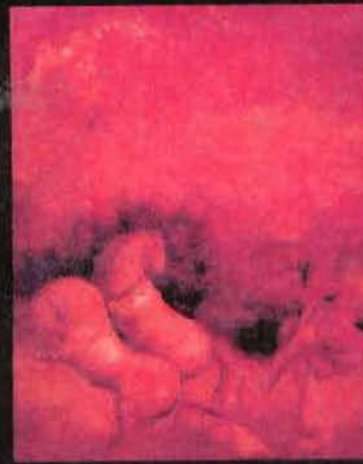
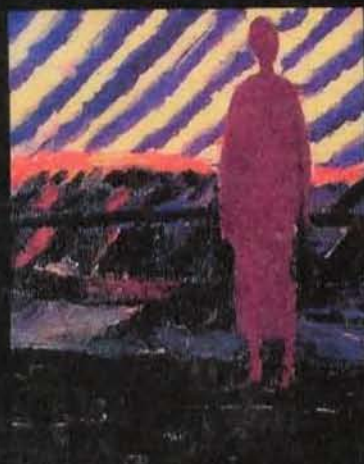


Personality Psychology

Randy J. Larsen • David M. Buss



Domains of Knowledge
About Human Nature

Brief Contents

INTRODUCTION

1. Introduction to Personality Psychology 2
2. Personality Assessment, Measurement, and Research Design 24

PART I

The Biological Domain

3. Physiological Approaches to Personality 64
4. Genetics and Personality 100
5. Evolutionary Perspectives on Personality 128

PART II

The Intrapsychic Domain

6. Psychoanalytic Approaches to Personality 164
7. Psychoanalytic Approaches: Contemporary Issues 196
8. Motives and the Dynamics of Personality 226

PART III

The Dispositional Domain

9. Traits and Trait Taxonomies 264
10. Theoretical and Measurement Issues in Trait Psychology 294
11. Personality Dispositions Over Time: Stability, Change, and Coherence 324

PART IV

The Cognitive/Experiential Domain

12. Cognitive Topics in Personality 358
13. Emotion and Personality 388
14. Approaches to the Self 424

PART V

The Social and Cultural Domain

15. Interpersonal Aspects of Personality 454
16. Sex, Gender, and Personality 478
17. Culture and Personality 504

PART VI

The Adjustment Domain

18. Stress, Coping, Adjustment, and Health 536
19. Disorders of Personality 566

CONCLUSION

20. Summary and Possible Future Directions 600

Contents

About the Authors xv | Preface xvi | How to Use This Textbook xxi

INTRODUCTION

Chapter 1

Introduction to Personality Psychology 2

Personality Defined 4

Personality Is the Set of Psychological Traits . . . 6

And Mechanisms . . . 7

Within the Individual . . . 7

That Are Organized and Relatively Enduring . . . 8

And That Influence . . . 9

His or Her Interactions With . . . 9

And Adaptations To . . . 10

The Environment 11

Three Levels of Personality Analysis 12

Human Nature 12

Individual and Group Differences 13

Individual Uniqueness 13

A Fissure in the Field 14

Grand Theories of Personality 14

Contemporary Research in Personality 14

Six Domains of Knowledge About Human Nature 16

Biological Domain 17

Intrapsychic Domain 18

Dispositional Domain 18

Cognitive-Experiential Domain 19

Social and Cultural Domain 20

Adjustment Domain 21

THE ROLE OF THEORY 22

KEY TERMS 23

Chapter 2

Personality Assessment, Measurement, and Research Design 24

Sources of Personality Data 26

Self-Report Data (S-Data) 26

Observer-Report Data (O-Data) 30

Test-Data (T-Data) 33

Life-Outcome Data (L-Data) 40

Issues in Personality Assessment 41

Evaluation of Personality Measures 43

Reliability 43

Validity 45

Generalizability 46



Research Designs in Personality	47
Experimental Methods	47
Correlational Studies	50
Case Studies	55
When to Use Experimental, Correlational, and Case Study Designs	56
SUMMARY AND EVALUATION	58
KEY TERMS	59



PART I

THE BIOLOGICAL DOMAIN

Chapter 3

Physiological Approaches to Personality 64

Sheldon's Physiological Approach to Personality	68
Physiological Measures Commonly Used in Personality Research	70
Electrodermal Activity (Skin Conductance)	70
Cardiovascular Activity	71
Brain Electrical Activity	72
Other Measures	73
Physiologically Based Dimensions of Personality	73
Extraversion-Introversion	73
Sensitivity to Reward and Punishment	77
Sensation Seeking	83
Neurotransmitters and Personality	86
Strength of the Nervous System	88
Morningness-Eveningness	90
Brain Asymmetry and Affective Style	95
SUMMARY AND EVALUATION	98
KEY TERMS	99

Chapter 4

Genetics and Personality 100

The Human Genome	102
Controversy About Genes and Personality	102
Goals of Behavioral Genetics	103
What Is Heritability?	105
Misconceptions About Heritability	106
Nature-Nurture Debate Clarified	106
Behavioral Genetic Methods	107
Selective Breeding—Studies of Humans' Best Friend	107
Family Studies	109
Twin Studies	109
Adoption Studies	112

Major Findings from Behavioral Genetic Research	113
Personality Traits	114
Attitudes	114
Drinking and Smoking	115
Shared Versus Nounshared Environmental Influences: A Riddle	118
Genes and the Environment	120
Genotype-Environment Interaction	120
Genotype-Environment Correlation	121
Molecular Genetics	122
Behavioral Genetics, Science, Politics, and Values	123
SUMMARY AND EVALUATION	125
KEY TERMS	127

Chapter 5

Evolutionary Perspectives on Personality 128

Evolution and Natural Selection	130
Natural Selection	130
Sexual Selection	131
Genes and Inclusive Fitness	132
Products of the Evolutionary Process	133
Evolutionary Psychology	135
Premises of Evolutionary Psychology	135
Empirical Testing of Evolutionary Hypotheses	136
Human Nature	138
Need to Belong	139
Helping and Altruism	140
Universal Emotions	142
Sex Differences	145
Sex Differences in Aggression	146
Sex Differences in Jealousy	148
Sex Differences in Desire for Sexual Variety	151
Sex Differences in Mate Preferences	152
Individual Differences	154
Environmental Effects on Species-Typical Patterns	155
Adaptive Self-Assessment of Heritable Qualities	155
Frequency-Dependent Alternative Strategies	156
Limitations of Evolutionary Psychology	157
SUMMARY AND EVALUATION	158
KEY TERMS	159



PART II

THE INTRAPSYCHIC DOMAIN

Chapter 6

Psychoanalytic Approaches to Personality 164

Sigmund Freud: A Brief Biography 167

Fundamental Assumptions of Psychoanalytic Theory 168

Basic Instincts: Sex and Aggression 168

Unconscious Motivation: Sometimes We Don't Know Why We Do What We Do 169

Psychic Determinism: Nothing Happens by Chance 173

Structure of Personality 174

Id: Reservoir of Psychic Energy 175

Ego: Executive of Personality 175

Superego: Upholder of Societal Values and Ideals 176

Interaction of the Id, Ego, and Superego 176

Anxiety and the Mechanisms of Defense 177

Types of Anxiety 177

Defense Mechanisms 178

Psychosexual Stages of Personality Development 184

Personality and Psychoanalysis 187

Techniques for Revealing the Unconscious 187

The Process of Psychoanalysis 190

Evaluation of Freud's Contributions 192

SUMMARY AND EVALUATION 194

KEY TERMS 195

Chapter 7

Psychoanalytic Approaches: Contemporary Issues 196

The Neo-Analytic Movement 199

Repression and Contemporary Research on Memory 199

Contemporary Views on the Unconscious 204

Ego Psychology 206

Erikson's Eight Stages of Development 206

Karen Horney and a Feminist Interpretation of Psychoanalysis 211

Emphasis on Self and the Notion of Narcissism 212

Object Relations Theory 214

Early Childhood Attachment 215

Adult Relationships 217

Parental Divorce: Does It Have an Impact on Children's Later Relationships? 219

SUMMARY AND EVALUATION 223

KEY TERMS 225

Chapter 8

Motives and the Dynamics of Personality 226

Basic Concepts 228

Need 230

Press 232

Apperception and the TAT 233

The Big Three Motives: Achievement, Power, and Intimacy 236

Need for Achievement 236

Need for Power 239

Need for Intimacy 242

Humanistic Tradition: The Motive to Self-Actualize 243

Maslow's Contributions 245

Roger's Contributions 249

SUMMARY AND EVALUATION 257

KEY TERMS 259

PART III

THE DISPOSITIONAL DOMAIN

Chapter 9

Traits and Trait Taxonomies 264

What Is a Trait? Two Basic Formulations 266

Traits as Internal Causal Properties 266

Traits as Purely Descriptive Summaries 267

The Act Frequency Formulation of Traits—an Illustration of the Descriptive Summary Formulation 268

Act Frequency Research Program 268

Critique of the Act Frequency Formulation 270

Identification of the Most Important Traits 270

Lexical Approach 271

Statistical Approach 272

Theoretical Approach 274

Evaluating the Approaches for Identifying Important Traits 275

Taxonomies of Personality 276

Eysenck's Hierarchical Model of Personality 276

Cattell's Taxonomy: The 16 Personality Factor System 280

Circumplex Taxonomies of Personality 282

Five-Factor Model 287

SUMMARY AND EVALUATION 292

KEY TERMS 293



Chapter 10

Theoretical and Measurement Issues in Trait Psychology 294

Theoretical Issues 296

Meaningful Differences Between Individuals 296

Consistency Over Time 297

Consistency Across Situations 299

Person-Situation Interaction 300

Aggregation 304

Measurement Issues 306

Carelessness 307

Faking on Questionnaires 308

Response Sets 308

Personality and Prediction 314

Personnel Selection—Choosing the Right Person for the Job of Police Officer 315

Educational Selection—The Graduate Record Exam (GRE) and Success in Graduate School 317

SUMMARY AND EVALUATION 322

KEY TERMS 323

Chapter 11

Personality Dispositions Over Time: Stability, Change, and Coherence 324

Conceptual Issues: Personality Development, Stability, Change, and Coherence 326

What Is Personality Development? 326

Rank Order Stability 326

Mean Level Stability 327

Personality Coherence 327

Personality Change 329

Three Levels of Analysis 330

Population Level 330

Group Differences Level 330

Individual Differences Level 331

Personality Stability Over Time 331

Stability of Temperament During Infancy 331

Stability During Childhood 333

Rank Order Stability in Adulthood 337

Mean Level Stability in Adulthood 339

Personality Change 340

Changes in Self-Esteem from Adolescence to Adulthood 341

Flexibility and Impulsivity 342

Autonomy, Dominance, Leadership, and Ambition 343

Sensation Seeking 344

Femininity 345

Competence 345

Independence and Traditional Roles 346

Personality Coherence Over Time: The Prediction of Socially Relevant Outcomes 348

Marital Stability, Marital Satisfaction, and Divorce 348

Alcoholism and Emotional Disturbance 349

Education, Academic Achievement, and Dropping Out 349

Prediction of Personality Change 349

Elements Besides Traits That Might Change Over Time 351

SUMMARY AND EVALUATION 352

KEY TERMS 353

PART IV

THE COGNITIVE/EXPERIENTIAL DOMAIN

Chapter 12

Cognitive Topics in Personality 358

Personality Revealed Through Perception 363

Field Dependence 363

Pain Tolerance and Sensory Reducing-Augmenting 367

Personality Revealed Through Interpretation 370

Locus of Control 371

Learned Helplessness 374

Personality Revealed Through Beliefs and Desires 378

Personal Projects Analysis 378

Life Tasks, Goals, and Strategies 380

Intelligence 383

SUMMARY AND EVALUATION 386

KEY TERMS 387

Chapter 13

Emotion and Personality 388

Issues in Emotion Research 390

Emotional States Versus Emotional Traits 390

Categorical Versus Dimensional Approaches to Emotion 391

Content Versus Style of Emotional Life 395

Content of Emotional Life 395

Style of Emotional Life 415

Interaction of Content and Style in Emotional Life 420

SUMMARY AND EVALUATION 422

KEY TERMS 423

Chapter 14

Approaches to the Self 424

Descriptive Component of the Self: Self-Concept 428

Development of the Self-Concept 428



Self-Schemata: Possible Selves, Ought Selves, and Undesired Selves	430
Evaluative Component of the Self: Self-Esteem	432
Evaluation of Oneself	432
Research on Self-Esteem	434
Social Component of the Self: Social Identity	443
The Nature of Identity	443
Identity Development	443
Identity Crises	444
SUMMARY AND EVALUATION	448
KEY TERMS	449



PART V

THE SOCIAL AND CULTURAL DOMAIN

Chapter 15

Interpersonal Aspects of Personality 454

Selection 456

Personality Characteristics Desired in a Marriage Partner	457
Assortative Mating for Personality: The Search for the Similar	459
Do People Get the Mates They Want?	460
Personality and the Selective Breakup of Couples	463
Shyness and the Selection of Risky Situations	464
Other Personality Traits and the Selection of Situations	465

Evocation 455

Aggression and the Evocation of Hostility	465
Evocation of Anger and Upset in Partners	466
Evocation Through Expectancy Confirmation	469

Manipulation—Social Influence Tactics 470

A Taxonomy of 11 Tactics of Manipulation	470
Sex Differences in Tactics of Manipulation	472
Personality Predictors of Tactics of Manipulation	473

SUMMARY AND EVALUATION 476

KEY TERMS 477

Chapter 16

Sex, Gender, and Personality 478

The Science and Politics of Studying Sex and Gender 480

History of the Study of Sex Differences	481
Calculation of Effect Size: How Large Are the Sex Differences?	482
Minimalists and Maximalists	483

Sex Differences in Personality 484

Five-Factor Model	484
Other Dimensions of Personality	487

Masculinity, Femininity, Androgyny, and Sex Roles 490

The Search for Androgyny 491

Gender Stereotypes 494

Theories of Sex Differences 497

Socialization and Social Roles 497

Hormonal Theories 499

Evolutionary Psychology Theory 500

An Integrated Theoretical Perspective 501

SUMMARY AND EVALUATION 502

KEY TERMS 503

Chapter 17

Culture and Personality 504

Cultural Violations—An Illustration 506

What Is Cultural Personality Psychology? 507

Three Major Approaches to Culture 507

Evoked Culture 508

Transmitted Culture 511

Cultural Universals 523

SUMMARY AND EVALUATION 532

KEY TERMS 533

PART VI

THE ADJUSTMENT DOMAIN

Chapter 18

Stress, Coping, Adjustment, and Health 536

Models of the Personality-Illness Connection 538

The Concept of Stress 542

Stress Response 543

Major Life Events 544

Daily Hassles 546

Primary and Secondary Appraisal 547

Coping Strategies and Styles 549

Attributional Style 550

Optimism and Physical Well-Being 552

Management of Emotions 554

Disclosure 557

Type A Behavior and Cardiovascular Disease 559

Hostility: The Lethal Component of the Type A Behavior Pattern 562

How the Arteries Are Damaged by Hostile Type A Behavior 564

SUMMARY AND EVALUATION 565

KEY TERMS 565



Chapter 19

Disorders of Personality 566

The Concept of Disorder 568

What Is Abnormal? 568

What Is a Personality Disorder? 569

Specific Personality Disorders 572

Erratic Group: Ways of Being Unpredictable, Violent, or Emotional 572

Eccentric Group: Ways of Being Different 585

Anxious Group: Ways of Being Nervous, Fearful, or Distressed 589

Dimensional Model of Personality Disorders 595

Causes of Personality Disorders 597

SUMMARY AND EVALUATION 598

KEY TERMS 599

CONCLUSION

Chapter 20

Summary and Possible Future Directions 600

Current Status of the Field 602

Domains of Knowledge: Where We've Been, Where We're Going 603

Biological Domain 603

Intrapsychic Domain 605

Dispositional Domain 606

Cognitive/Experiential Domain 607

Social and Cultural Domain 608

Adjustment Domain 609

Integration: Personality in the New Millennium 610

Glossary G-1

References R-1

Credits C-1

Name Index NI-1

Subject Index SI-1

